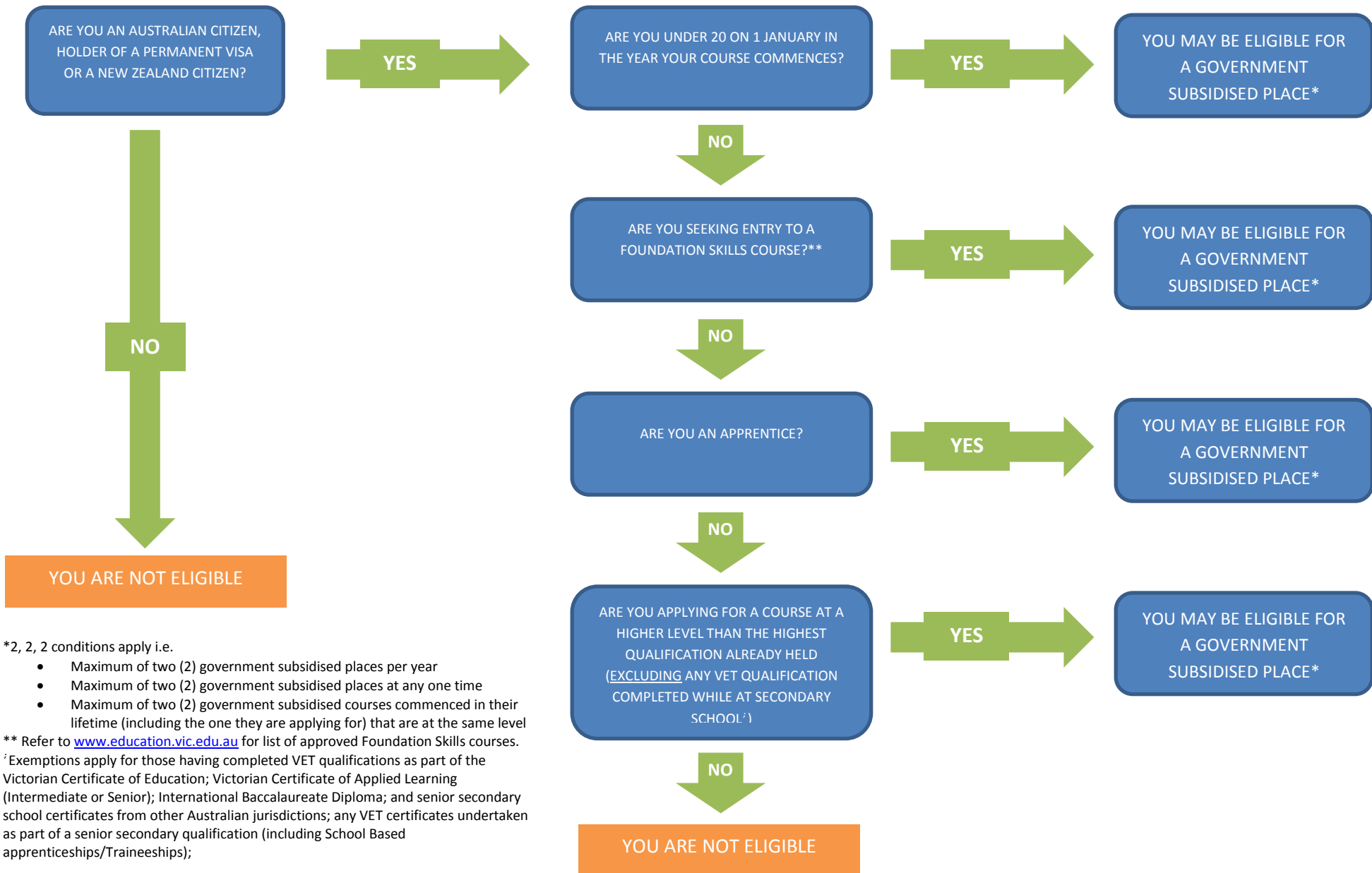


Are you eligible for a Government Subsidised Place?



*2, 2, 2 conditions apply i.e.

- Maximum of two (2) government subsidised places per year
- Maximum of two (2) government subsidised places at any one time
- Maximum of two (2) government subsidised courses commenced in their lifetime (including the one they are applying for) that are at the same level

** Refer to www.education.vic.edu.au for list of approved Foundation Skills courses.

† Exemptions apply for those having completed VET qualifications as part of the Victorian Certificate of Education; Victorian Certificate of Applied Learning (Intermediate or Senior); International Baccalaureate Diploma; and senior secondary school certificates from other Australian jurisdictions; any VET certificates undertaken as part of a senior secondary qualification (including School Based apprenticeships/Traineeships);